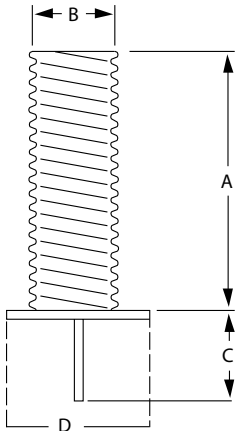


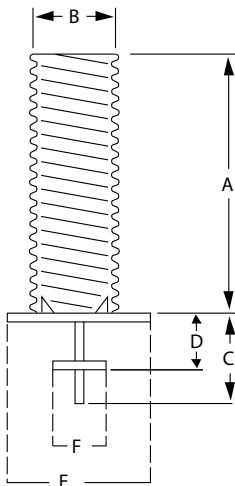
GALVANIZED STEEL FOUNDATION SLEEVES

The most common type of flagpole installation is the in-ground foundation sleeve method which calls for 1' of the flagpole to be encased in the ground sleeve for each 10' of exposed flagpole height. The diameter of the sleeve should be at least 2" greater than the outside diameter of the flagpole with the area between the flagpole and the sleeve filled with dry sand. Sleeves with a 6" diameter are supplied with a base plate and grounding spike. Sleeves with a diameter of greater than 6" are supplied with a base plate, support plate, grounding spike and, for ease of vertical alignment, steel centering wedges welded to the inside of the base plate. If you require other sizes than listed or have special on-site conditions please consult the factory.



WITH BASE PLATE & GROUND SPIKE

ITEM #	A	B	C	D	1-5	6+	LBS.
380000	2'	6"	6"	8"	\$69	\$63	20
380002	3'	6"	6"	8"	85	78	24

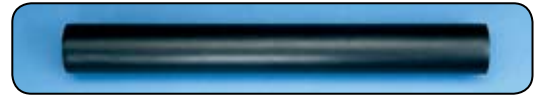


WITH BASE PLATE, SUPPORT PLATE, GROUNDING SPIKE & STEEL CENTERING WEDGES

ITEM #	A	B	C	D	E	F	1-5	6+	LBS.
380003	3'	8"	18"	6"	12"	6"	\$109	\$98	33
380004	3 1/2'	8"	18"	6"	12"	6"	116	105	40
380005	3'	10"	18"	6"	16"	8"	123	111	40
380006	3 1/2'	10"	18"	6"	16"	8"	138	125	45
380007	4'	12"	18"	6"	16"	8"	184	167	57
380008	5'	12"	18"	6"	18"	9"	218	196	65
380009	5'	15"	18"	6"	20"	10"	370	350	85
380010	6'	15"	18"	10"	20"	10"	445	401	120
380011	6'	18"	24"	10"	24"	12"	490	445	130
380012	7'	15"	24"	12"	24"	12"	490	445	140
380013	7'	18"	24"	12"	24"	12"	557	501	150
380014	8'	18"	24"	12"	24"	12"	590	534	160

PVC SLEEVES

Poles slip into form fit sleeves snugly - no voids to fill with sand. Standard sleeves require wood wedges & sand for a proper installation.



ITEM #	FOR POLE		TYPE	1-5	6+	LBS.
	DIA.	LEN.				
380015	1 3/8"	12"	FORM FIT	\$5.60	\$5.00	.14
380016	1 5/8"	15"	FORM FIT	6.70	6.00	.20
380017	1 3/4"	20"	FORM FIT	7.80	7.00	.26
380018	2"	15"	FORM FIT	10.10	8.90	.25
380020	2"	20"	FORM FIT	11.10	10.10	.34
380021	2 1/2"	30"	FORM FIT	14.80	13.80	1.1
380022	3"	20"	FORM FIT	18.00	17.00	.95
380023	3" - 3 1/2"	24"	STANDARD	16.00	15.00	1.6
380024	3" - 3 1/2"	30"	STANDARD	22.00	21.00	1.9

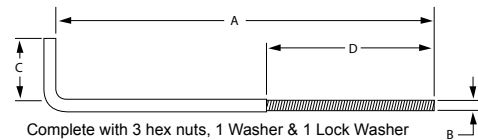
FIBERGLASS SLEEVES



ITEM #	LENGTH	DIAMETER	1-5	6+	LBS.
380025	18"	6.3"	\$25	\$23	1.1
380026	24"	5"	39	36	1.4
380194	30"	6.3"	42	39	2.2
380195	30"	9.25"	73	64	4.0
380027	36"	8"	83	73	4.4
380029	48"	8"	105	93	6.2
380030	60"	14"	301	271	18
380031	72"	14"	385	346	27
380032	84"	21"	835	780	34

GALVANIZED STEEL ANCHOR BOLTS

For Shoe Base Installations



ITEM #	A	B	C	D	1-5	6+	LBS.
380037	16"	5/8"	3 1/2"	4"	\$20	\$18	2.2
380038	24"	3/4"	4"	5"	21	19	3.3
380039	36"	1"	4"	6"	27	23	8.1
380040	40"	1"	4"	6"	34	30	8.9
380041	54"	1 1/4"	6"	8"	101	91	29

COPPER CLAD LIGHTNING KIT

Each kit contains 5' long by 1/2" diameter copper clad rod, one 6' long by 1/2" diameter copper wire plus one connecting bracket.

BRACKET ONLY

ITEM #	1-5	6+	LBS.
380036	\$27	\$25	.36

5' x 1/2" ROD ONLY

ITEM #	PRICE	LBS.
380035	\$55	1.2

WIRE ONLY

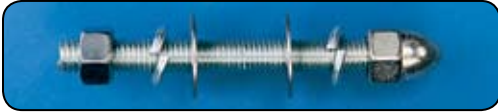
ITEM #	PER FOOT	LBS.
380034	\$7.00	.36

COMPLETE SET



ITEM #	1-5	6+	LBS.
380033	\$100	\$90	4.5

FOUNDATION SLEEVES, MOUNTING HARDWARE & LIGHTS



THRU WALL BOLTS

For Mounting Outrigger & Vertical Wall Mount Brackets

Zinc plated steel complete with one acorn nut, one hex nut, two washers & two lock washers.

SIZE	LBS	SILVER			CLEAR			BRONZE #313			WHITE			BLACK		
		ITEM #	1-5	6+	ITEM #	1-5	6+	ITEM #	1-5	6+	ITEM #	1-5	6+	ITEM #	1-5	6+
3/8" x 6"	.48	380042	\$10	\$9	380054	\$11	\$10	380066	\$11	\$10	380078	\$11	\$10	380090	\$11	\$10
3/8" x 12"	.78	380043	11	10	380055	12	11	380067	12	11	380079	12	11	380091	12	11
3/8" x 18"	1.1	380044	12	11	380056	13	12	380068	13	12	380080	13	12	380092	13	12
3/8" x 24"	1.4	380045	13	12	380057	14	13	380069	14	13	380081	14	13	380093	14	13
3/8" x 30"	1.7	380046	14	13	380058	15	14	380070	15	14	380082	15	14	380094	15	14
3/8" x 36"	2.0	380047	16	15	380059	18	16	370071	18	16	380083	18	16	380095	18	16
5/8" x 6"	.75	380048	11	10	380060	12	11	380072	12	11	380084	12	11	380096	12	11
5/8" x 12"	1.2	380049	12	11	380061	13	12	380073	13	12	380085	13	12	380097	13	12
5/8" x 18"	1.7	380050	13	12	380062	14	13	380074	14	13	380086	14	13	380098	14	13
5/8" x 24"	2.1	380051	14	13	380063	15	14	380075	15	14	380087	15	14	380099	15	14
5/8" x 30"	2.5	380052	16	15	380064	18	16	380076	18	16	380088	18	16	380100	18	16
5/8" x 36"	2.9	380053	18	16	380065	19	17	380077	19	17	380089	19	17	380101	19	17



MOUNTING BOLTS WITH EXPANSION SHIELDS

For Mounting Outrigger & Vertical Wall Mount Brackets

Zinc plated steel complete with one acorn nut, one washer & one lock washer.

SIZE	LBS	SILVER			CLEAR			BRONZE #313			WHITE			BLACK		
		ITEM #	1-5	6+	ITEM #	1-5	6+	ITEM #	1-5	6+	ITEM #	1-5	6+	ITEM #	1-5	6+
3/8" x 6"	.55	380102	\$12	\$11	380104	\$13	\$12	380106	\$13	\$12	380108	\$13	\$12	380110	\$13	\$12
5/8" x 6"	.81	380103	14	13	380105	15	14	380107	15	14	380109	15	14	380111	15	14



TUNNEL LIGHTS

Sold in sets only - 18" long by 6" diameter aluminum cylinders. Fixtures accept 150 watt flood lamps for up, down or up/down lighting (lamps not included in pricing below). Wiring not include in pricing below.

ADD ON FOR FACTORY SET-UP OF WIRING ON EXTERNAL HALYARD POLE - NO ACCESS DOOR \$279 w/ACCESS DOOR \$490

ADD ON FOR FACTORY SET-UP OF WIRING ON INTERNAL HALYARD POLE - NO ACCESS DOOR \$390 w/ACCESS DOOR \$601

NOTE: Access doors can only be supplied on 4" and larger diameter poles.

FOR POLE		SILVER			CLEAR			BRONZE #313			WHITE			BLACK		
DIA.	LBS	ITEM #	1-5	6+	ITEM #	1-5	6+	ITEM #	1-5	6+	ITEM #	1-5	6+	ITEM #	1-5	6+
5"	18	380112	\$890	\$801	380119	\$1,002	\$902	380126	\$1,002	\$902	380133	\$1,002	\$902	380140	\$1,002	\$902
5 1/2"	18	380113	890	801	380120	1,002	902	380127	1,002	902	380134	1,002	902	380141	1,002	902
6"	18	380114	890	801	380121	1,002	902	380128	1,002	902	380135	1,002	902	380142	1,002	902
7"	18	380115	890	801	380122	1,002	902	380129	1,002	902	380136	1,002	902	380143	1,002	902
8"	18	380116	890	801	380123	1,002	902	380130	1,002	902	380137	1,002	902	380144	1,002	902
10"	18	380117	1,002	902	380124	1,113	1,002	380131	1,113	1,002	380138	1,113	1,002	380145	1,113	1,002
12"	18	380118	1,002	902	380125	1,113	1,002	380132	1,113	1,002	380139	1,113	1,002	380146	1,113	1,002

Replacement lenses available - Item # 380190 1-5 \$110 ea. 6+ \$100 ea. Weight = .33 lbs.

LIGHTWEIGHT FLOODLIGHTS

These lights fit on any diameter pole and are supplied with a 150 watt clear tungsten halogen lamp.

ADD ON FOR FACTORY SET-UP OF WIRING ON EXTERNAL HALYARD POLE - NO ACCESS DOOR \$279 w/ACCESS DOOR \$490

ADD ON FOR FACTORY SET-UP OF WIRING ON INTERNAL HALYARD POLE - NO ACCESS DOOR \$390 w/ACCESS DOOR \$601



MODEL	ITEM #	COLOR	1-5	6+	LBS.
LWFL SIL	380192	SILVER	\$268	\$245	2.0
LWFL BR	380147	BRONZE	268	245	2.0
LWFL BL	380193	BLACK	268	245	2.0

NOTE: Access doors can only be supplied on 4" and larger diameter poles.



OBSTRUCTION (BEACON) LIGHT

This light measures 8 3/4" x 4 1/2" and is ideal for taller flagpoles near airports or flight paths. Lamp bulb is not included. Set-up of flagpole to accept this lighting fixture can be done at the factory; call for pricing.

MODEL	ITEM #	1-5	6+	LBS.
OL-R	380148	\$310	\$280	2.8